

Strengthening of Safe Management Measures (SMMs) at Fishery Ports

Our fishery ports are key distribution hubs in our seafood supply. Following the closure of the Jurong Fishery Port (JFP) due to a COVID-19 cluster, the Singapore Food Agency (SFA) conducted an investigation into how the transmission could have occurred and identified areas where Safe Management Measures (SMMs) could be strengthened. SMMs will be enhanced in the following three main areas of Jurong and Senoko Fishery Ports: Entrance; Marketplace; and Wharf and Unloading Area.

Entrance

2 Since March 2020, only authorised entry pass holders – primarily comprising tenants, workers and traders – are allowed entry into the ports. All are required to adhere strictly to TraceTogether SafeEntry with temperature checks, while foreign delivery drivers would have undergone on-arrival testing prior to entry into Singapore via the checkpoints.

- 3 With the review, the entry requirements have been enhanced in the following ways:
- All authorised entry pass holders are required to undergo testing prior to entry, before they transition to a seven-day Rostered Routine Testing (RRT) regime. Those who do not undergo testing or do not have negative test results will not be allowed to enter the fishery ports.
 - All foreign delivery drivers must remain in their vehicles for SafeEntry check-in and temperature taking instead of alighting, so as to reduce intermingling.

Marketplace

4 Safe Distancing Ambassadors (SDAs) and Enforcement Officers (EOs) have been conducting surveillance of the ports to ensure compliance with SMMs. Tenants, workers and seafood traders have been reminded to limit interaction with one another and adhere to SMMs.

- 5 With the review, the SMMs for the marketplace have been enhanced in the following ways:
- Access into the marketplace will be restricted, including limiting the number of seafood traders within the premises at any time.
 - Tenants and workers will be segregated into groups and should not mingle. They will have separate toilet facilities, as well as meal and smoking areas to reduce intermingling.

- Enhanced surveillance and enforcement of SMMs. Firm enforcement action will be taken against those who breach SMMs.

Wharf and Unloading Area

6 Since March 2020, foreign fishing crews have not been allowed to land, while foreign delivery drivers have been limited to the demarcated areas for unloading or collection of containers. Interaction between fishery port personnel and foreign individuals were limited to the unloading of goods.

7 With the review, we are further reducing contact in the following ways:

- All unloading activity to be supervised by SDAs and will also be monitored via CCTV.
- Fish containers, such as boxes or crates, will be disinfected prior to collection.
- Workers must keep their distance as foreign workers unload the goods. They can only pick up the goods after the foreign workers move away from the demarcated unloading area.
- All workers will be required to adhere to a hand hygiene and sanitation regime, and must wear their masks and gloves when they pick up the goods.

Enhanced measures for Jurong Fishery Port

8 While our fishery ports are both distribution hubs, there are unique differences in the sites that may require customised SMMs. For example, larger fishing vessels tend to offload at JFP. To limit interaction with foreign fishing crew, there will be dedicated workers operating forklifts or cranes within the wharf area to move seafood from the vessels to the gates for collection by fishery port workers.

9 JFP reopens on 31 July 2021 for tenants to return to make arrangements for resumption of operations. Tenants will be briefed on the enhanced measures and SFA will work with the industry to facilitate strict compliance. Unloading and wholesale activities will be allowed to resume on 2 August 2021. Since the temporary closure of JFP, we have conducted two rounds of deep cleaning of the entire site, including disinfecting the tenants' offices. We will continue to regularly clean common areas and crates when JFP reopens.

Unified fight against COVID-19

10 Collective responsibility of all who work and trade at our ports is critical in keeping everyone safe. We urge all tenants, workers, and traders to adhere to the measures while at our fishery ports.

11 We thank the seafood industry for working with us to implement SMMs since the pandemic, as well as during this period to identify areas for tightened SMMs. The review is an ongoing process, and SFA will be working with the trade associations to refine the enhanced measures and adapt them if necessary to the unique working conditions of our fishery ports.

SINGAPORE FOOD AGENCY

28 July 2021

ANNEX A

Photos: Entrance



Caption: All authorised entry pass holders are required to undergo testing prior to entry, before they transition to a seven-day Rostered Routine Testing (RRT) regime.

Photos: Marketplace

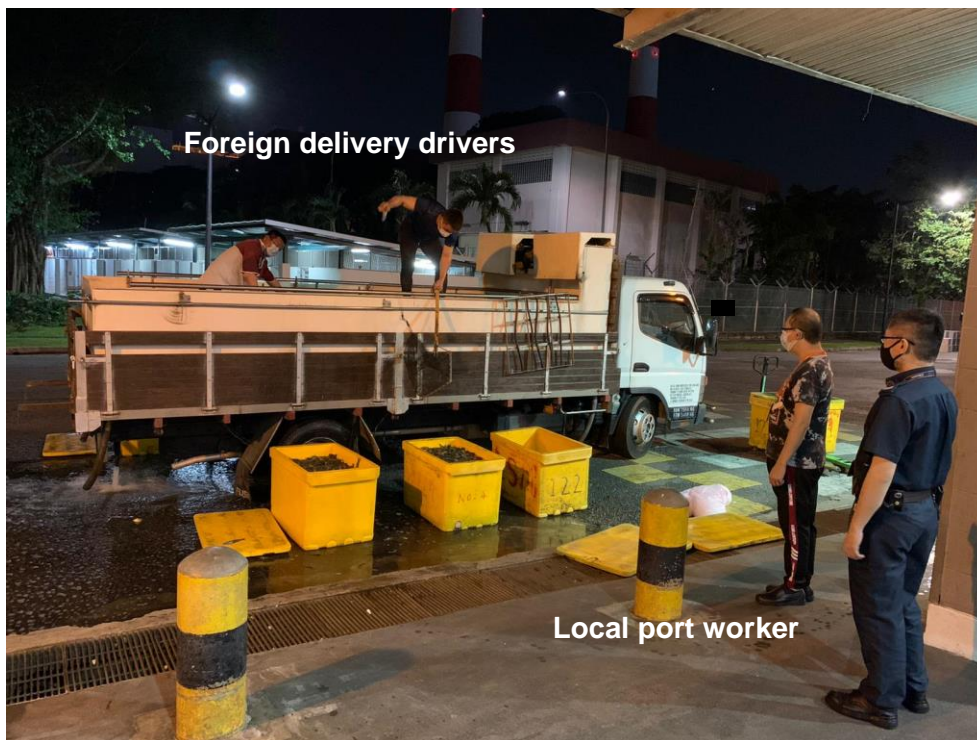


Caption: Entry into the marketplace is restricted, including limits on the number of seafood traders within the premises.

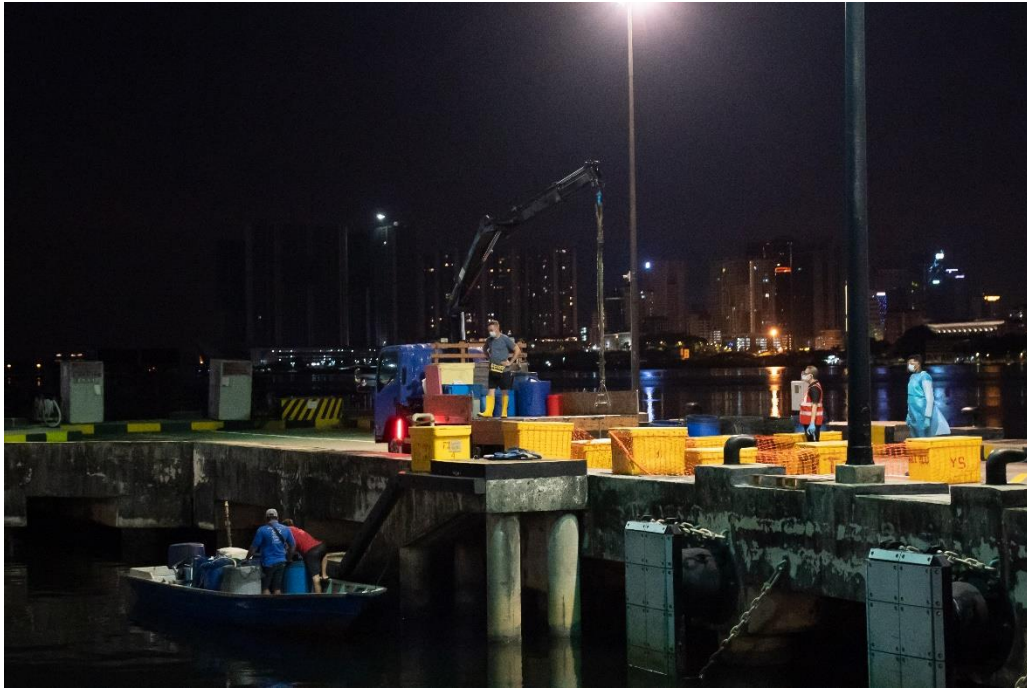


Caption: Fishery port workers based in the marketplace are split into teams, which must not mingle with one another. Marketplace is divided using barriers to prevent intermingling.

Photos: Wharf and Unloading area



Caption: Workers must ensure contactless delivery.



Caption: Fishery port workers must wait till foreign crew have moved away, before moving forward to collect the goods. All unloading activity will be supervised.